



TEMPLATES
ISSUE 42

BACKPACK

By Boutique-sha Page 81

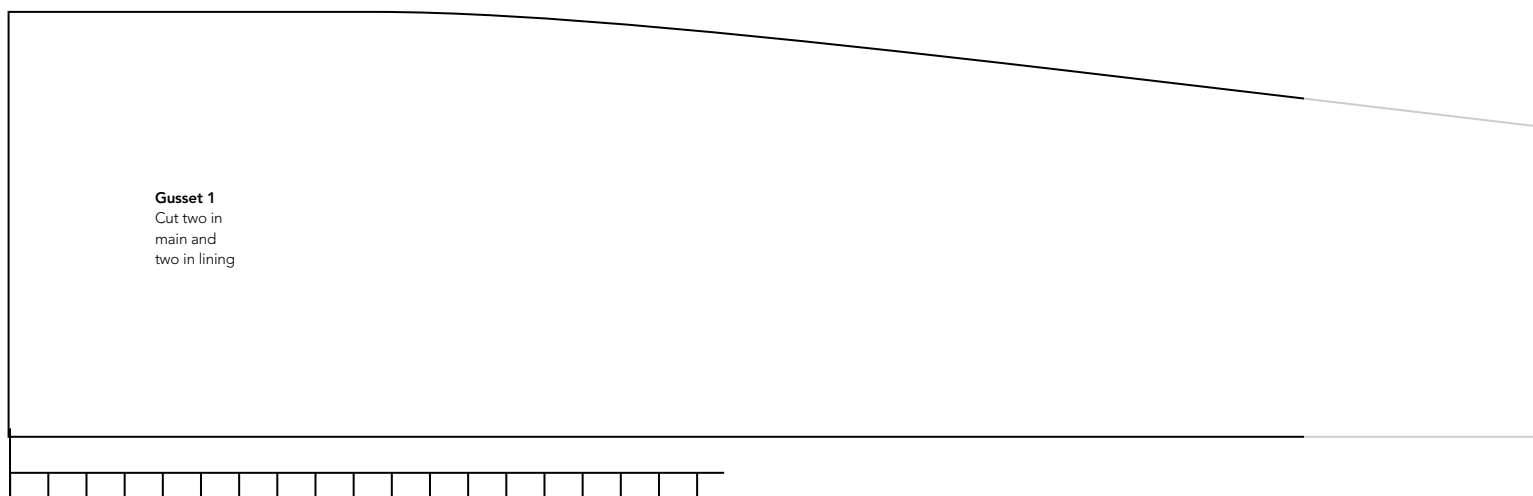
Lower gusset
Cut two in main
and two in lining

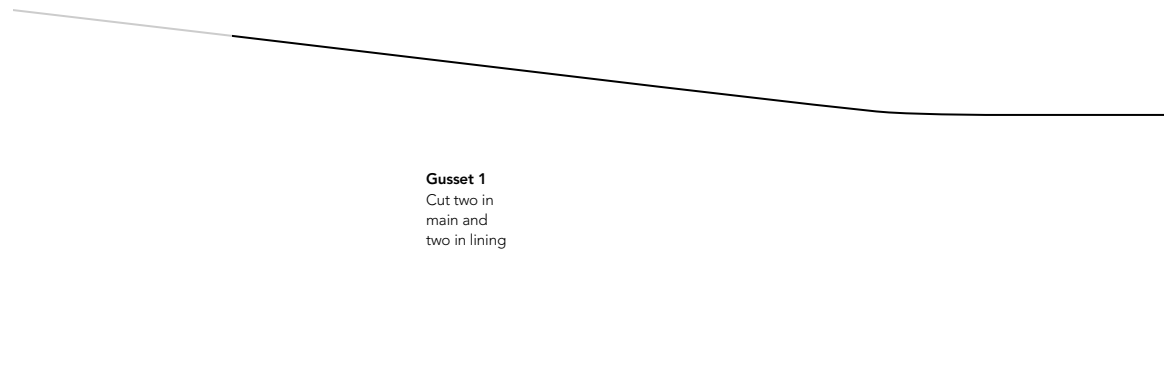
BACKPACK

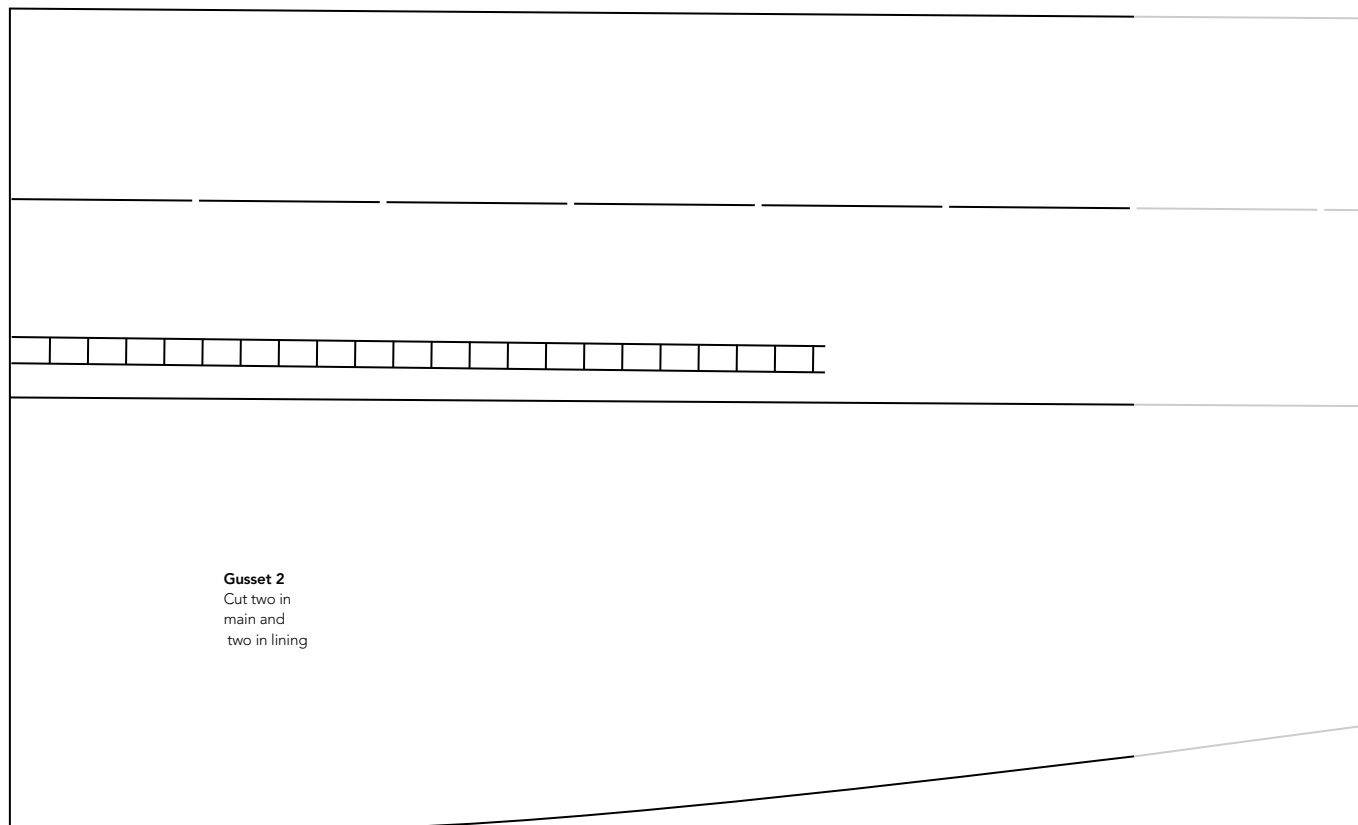
By Boutique-sha Page 81



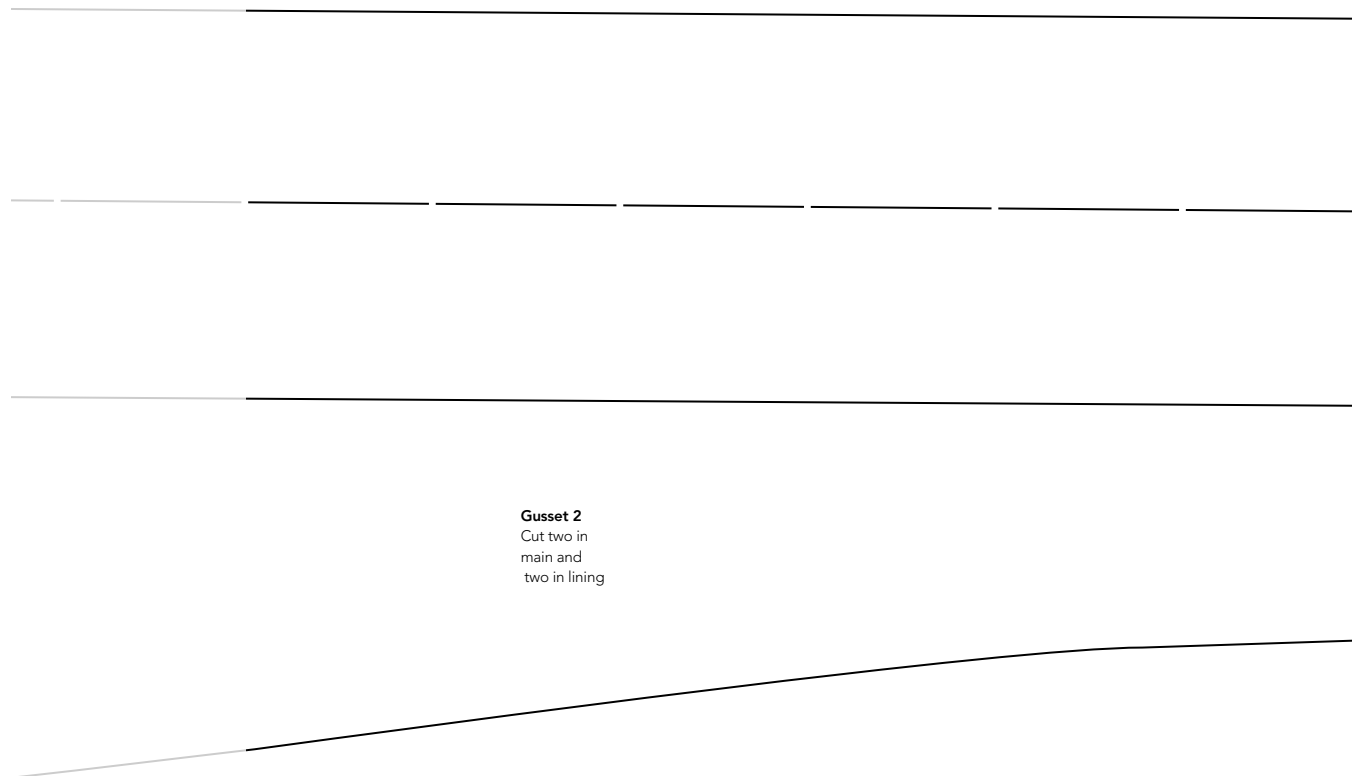
Lower gusset
Cut two in main
and two in lining





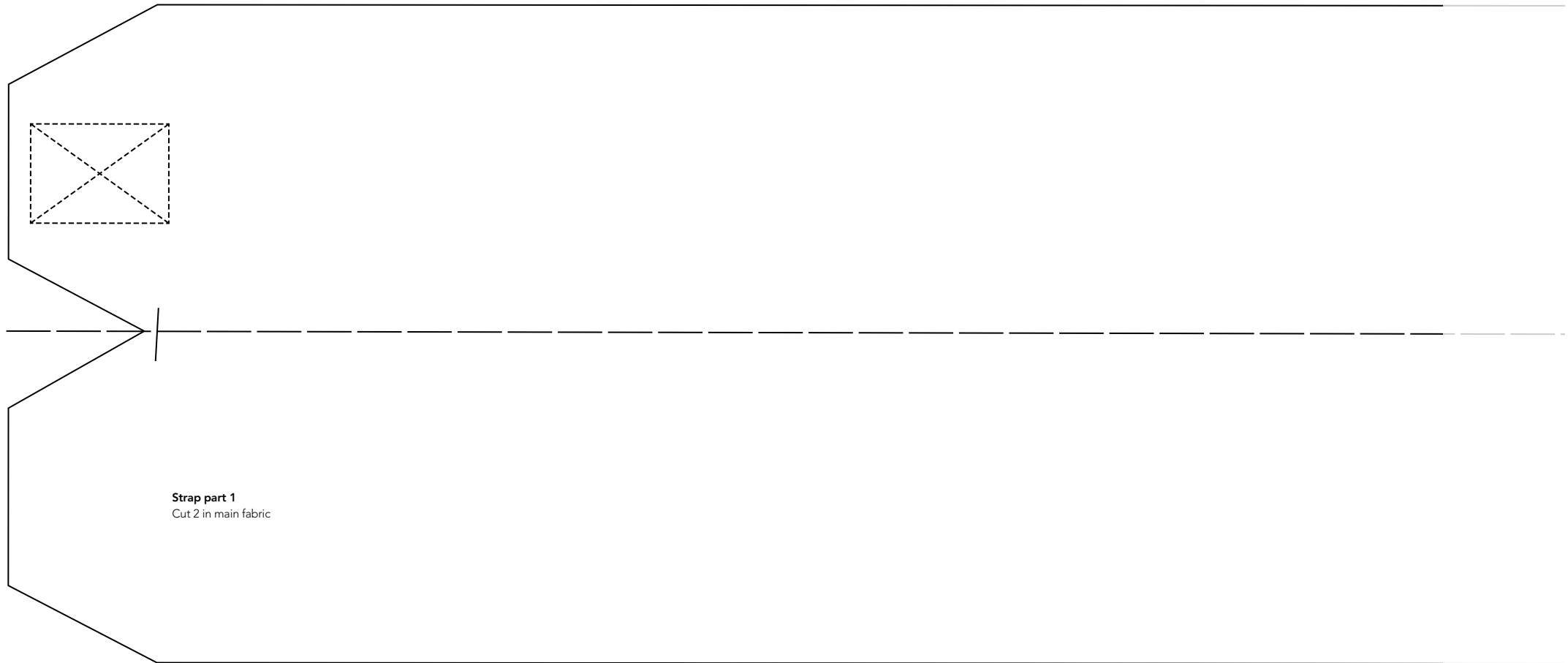


Gusset 2
Cut two in
main and
two in lining



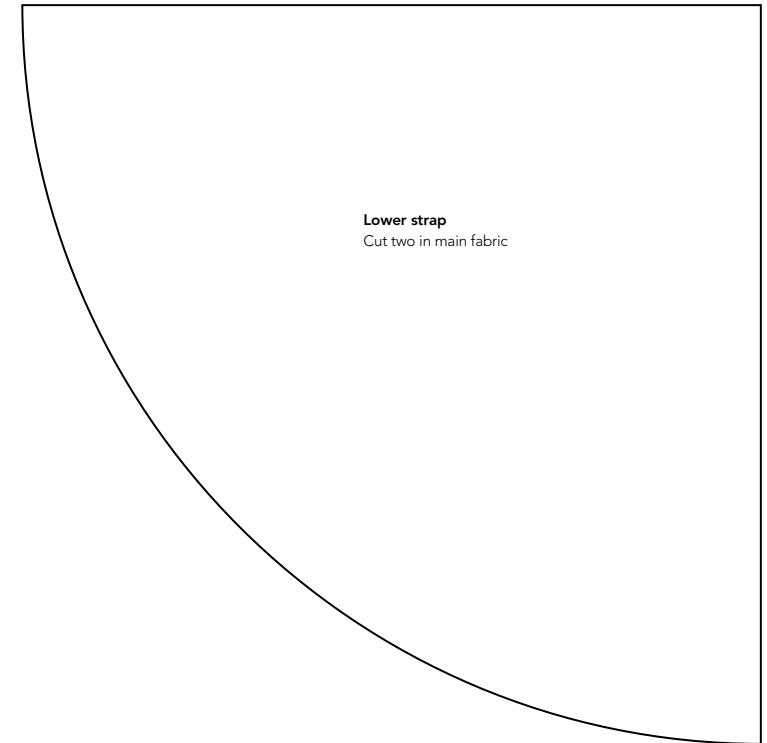
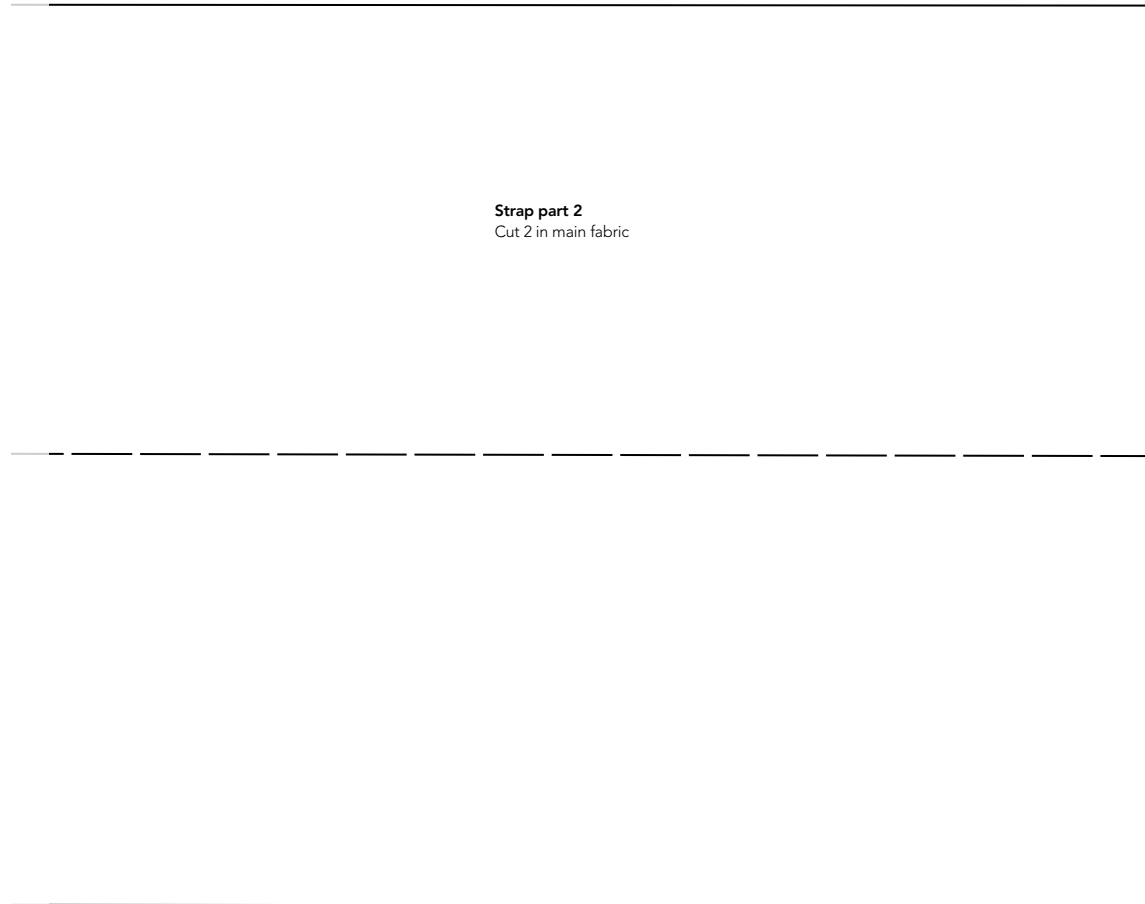
BACKPACK

By Boutique-sha Page 81



BACKPACK

By Boutique-sha Page 81



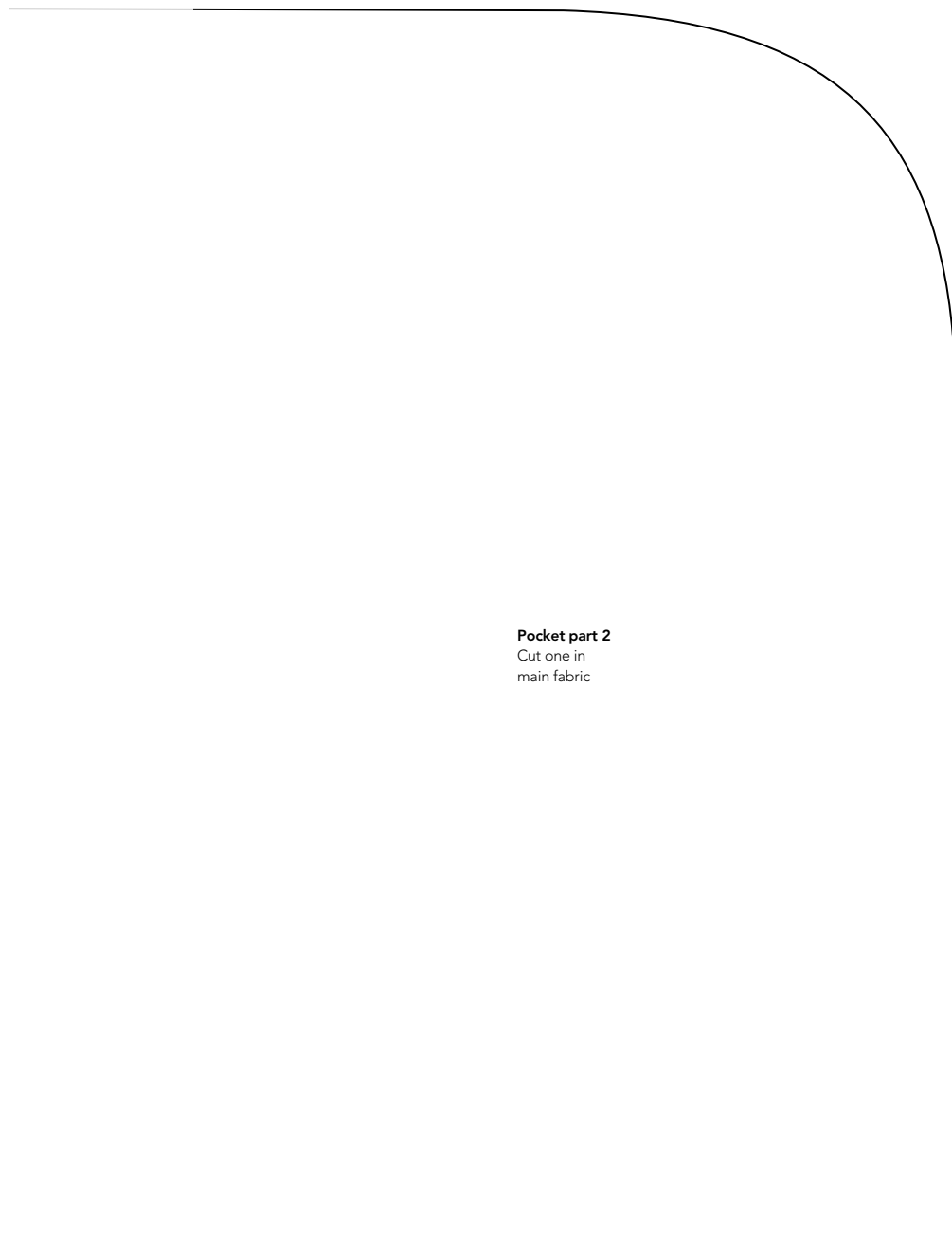
BACKPACK

By Boutique-sha Page 81

Pocket part 1
Cut one in
main fabric

BACKPACK

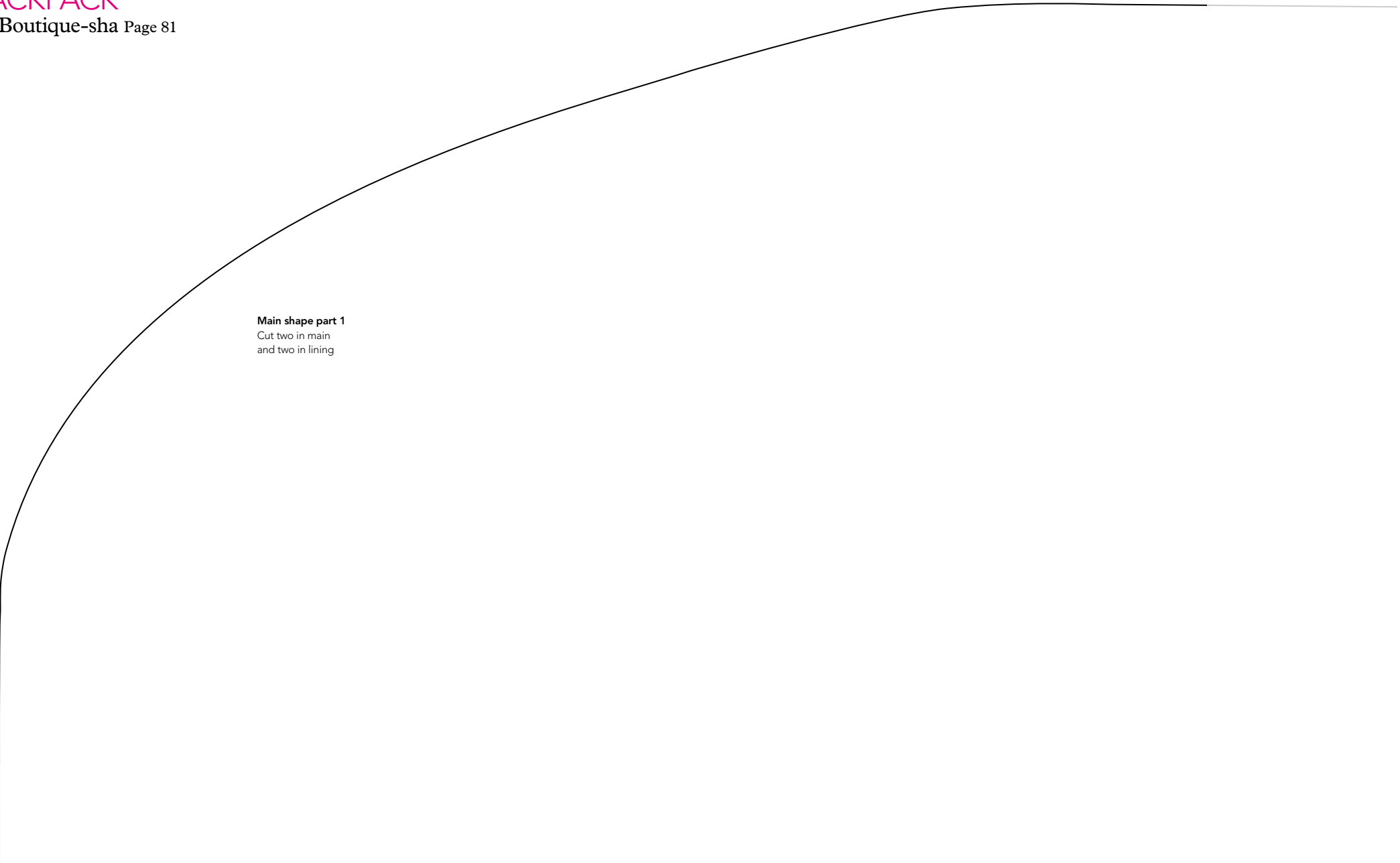
By Boutique-sha Page 81



Pocket part 2
Cut one in
main fabric

BACKPACK

By Boutique-sha Page 81



Main shape part 1
Cut two in main
and two in lining

BACKPACK

By Boutique-sha Page 81



Main shape part 2

Cut two in main
and two in lining

BACKPACK

By Boutique-sha Page 81

Main shape part 3

Cut two in main
and two in lining

BACKPACK

By Boutique-sha Page 81

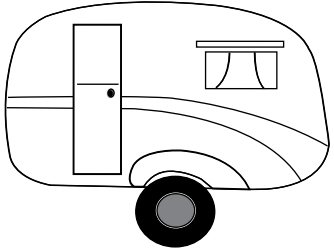


Main shape part 4

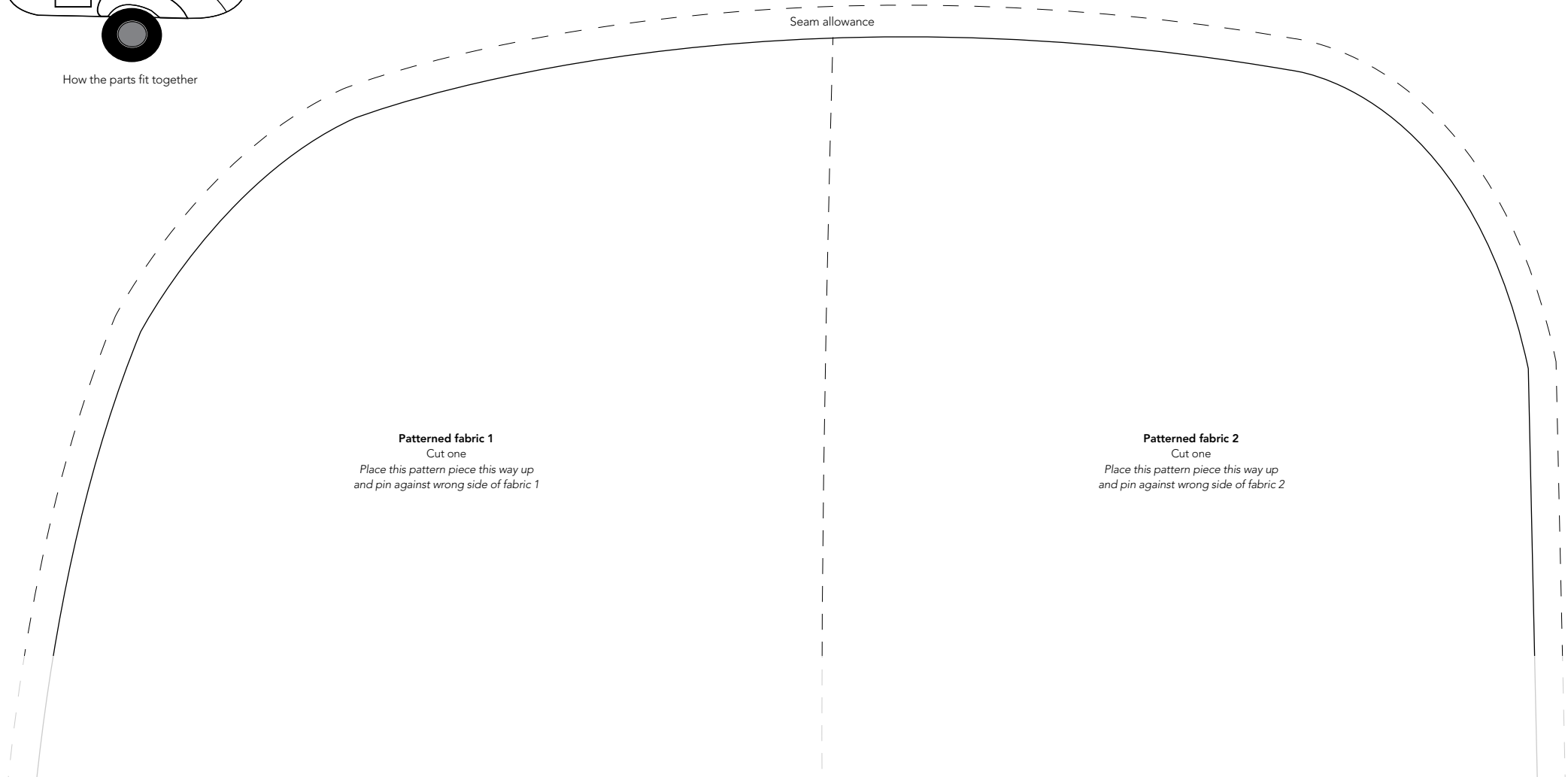
Cut two in main
and two in lining

CARAVAN 1

By Sally Roydhouse Page 58



How the parts fit together



Seam allowance

Patterned fabric 1

Cut one

Place this pattern piece this way up
and pin against wrong side of fabric 1

Patterned fabric 2

Cut one

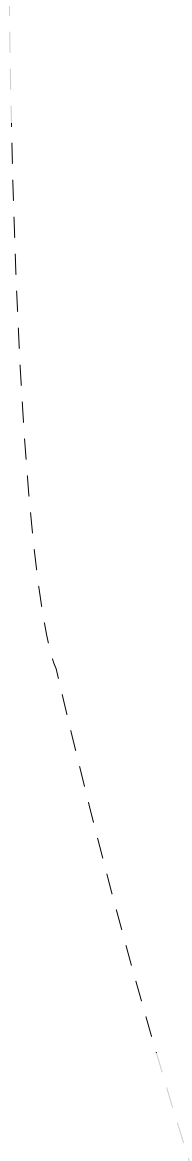
Place this pattern piece this way up
and pin against wrong side of fabric 2

CARAVAN 1

By Sally Roydhouse Page 58



Pattered fabric 1
Cut one
*Place this pattern piece this way up
and pin against wrong side of fabric 1*

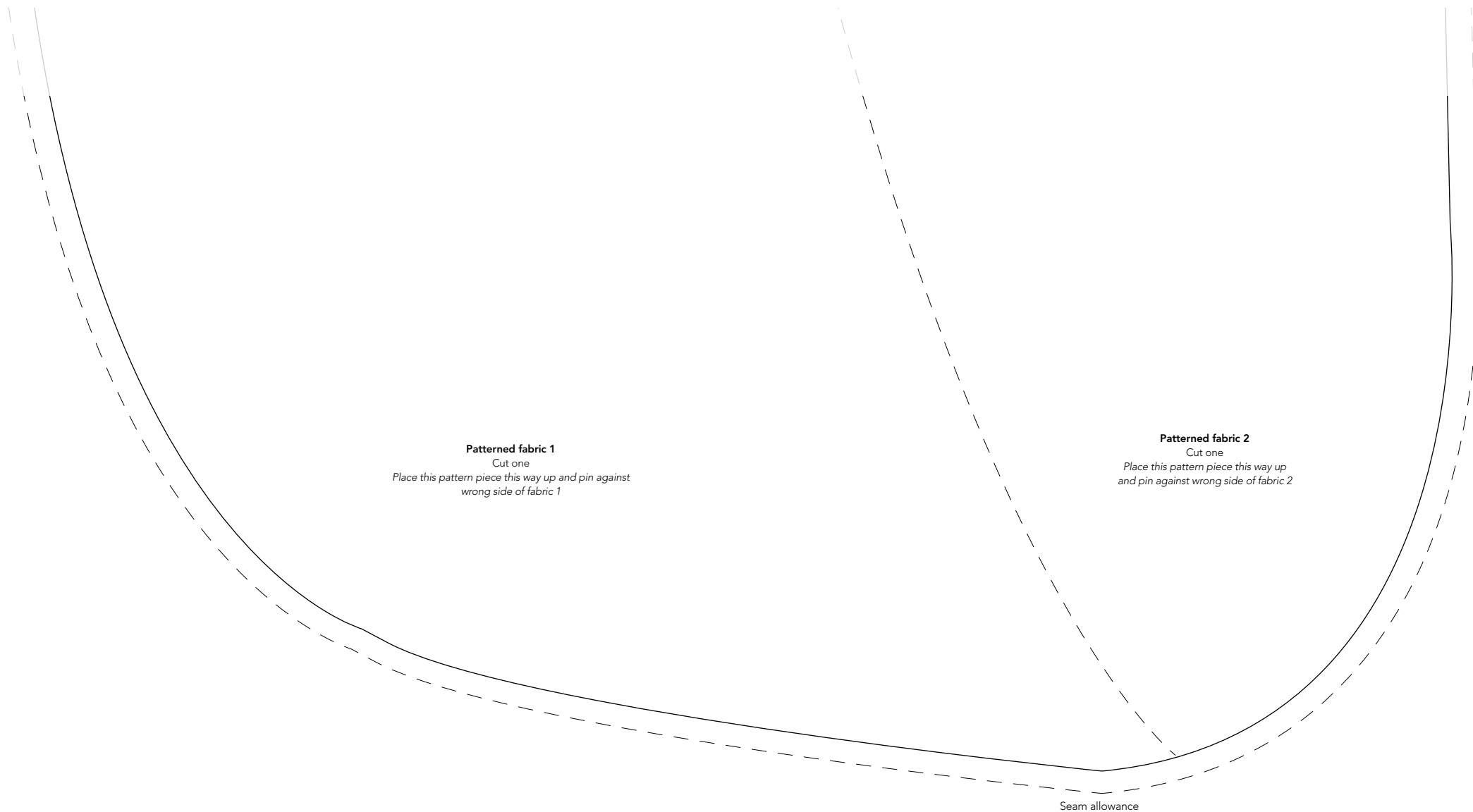


Pattered fabric 2
Cut one
*Place this pattern piece this way up
and pin against wrong side of fabric 2*



CARAVAN 1

By Sally Roydhouse Page 58



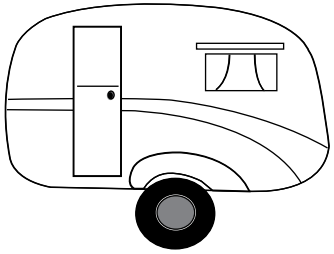
Patterned fabric 1
Cut one
*Place this pattern piece this way up and pin against
wrong side of fabric 1*

Patterned fabric 2
Cut one
*Place this pattern piece this way up
and pin against wrong side of fabric 2*

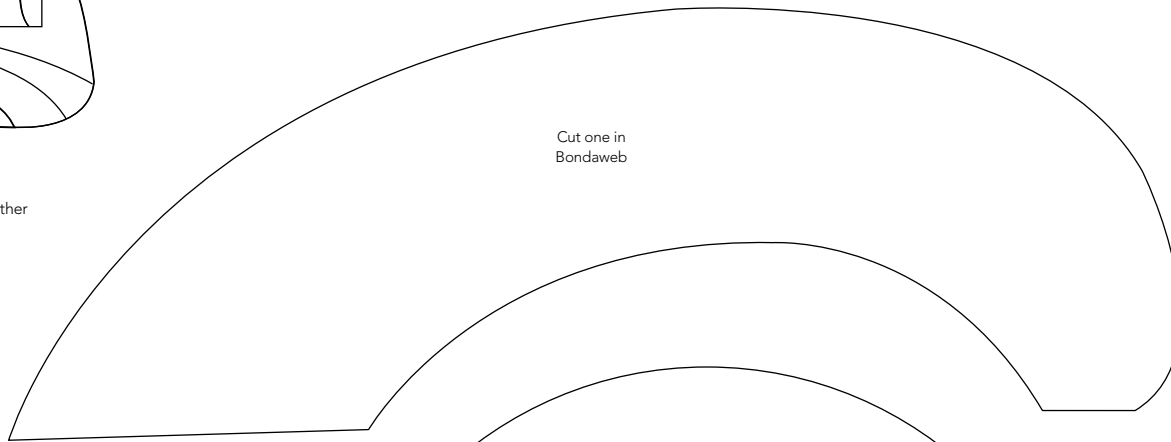
Seam allowance

CARAVAN 1

By Sally Roydhouse Page 58



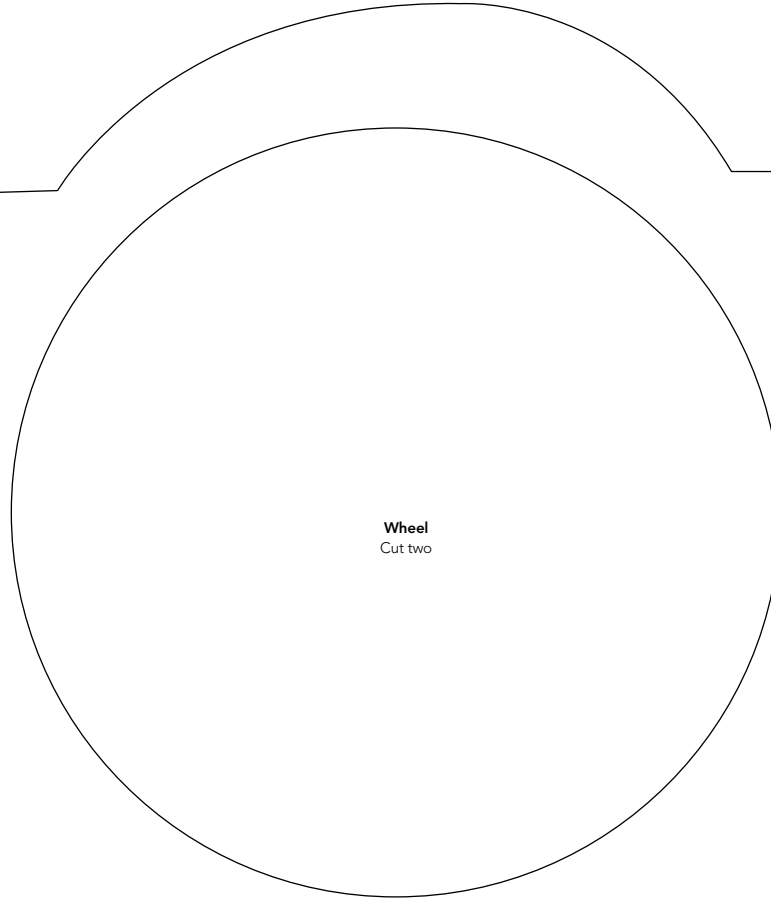
How the parts fit together



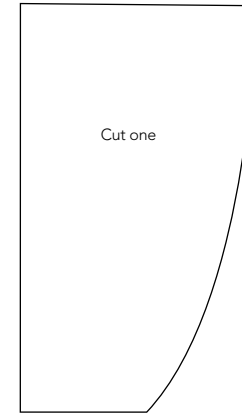
Cut one in Bondaweb



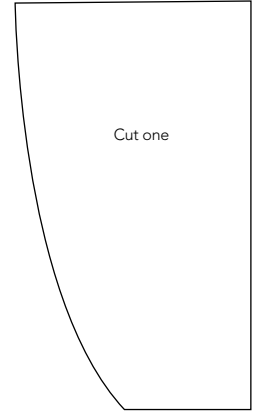
Wheel trim
Cut two



Wheel
Cut two



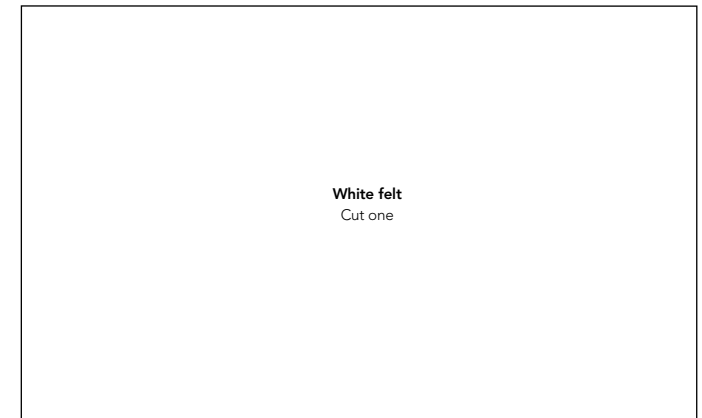
Cut one



Cut one

Curtains

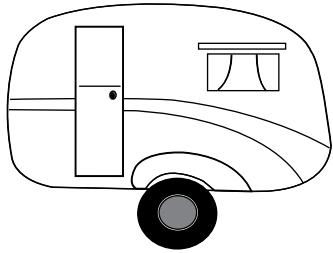
Doorknob
Cut one



White felt
Cut one

CARAVAN 1

By Sally Roydhouse Page 58



How the parts fit together

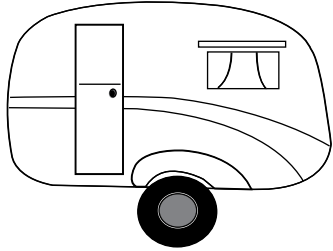
Cut one in Bondaweb

Cut one in Bondaweb

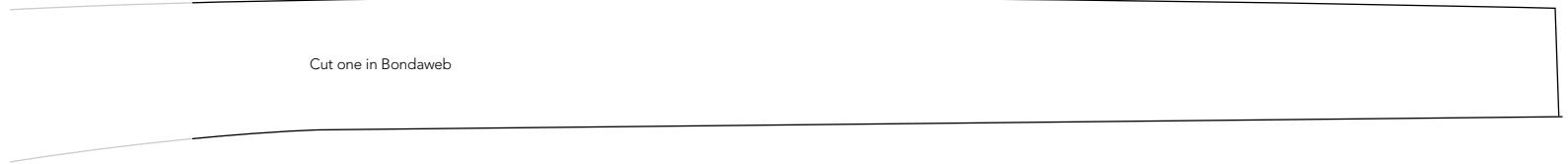
Door
Cut one

CARAVAN 1

By Sally Roydhouse Page 58

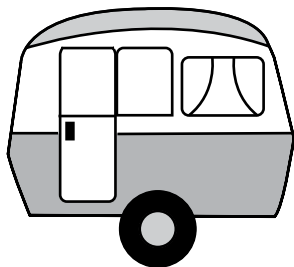


How the parts fit together

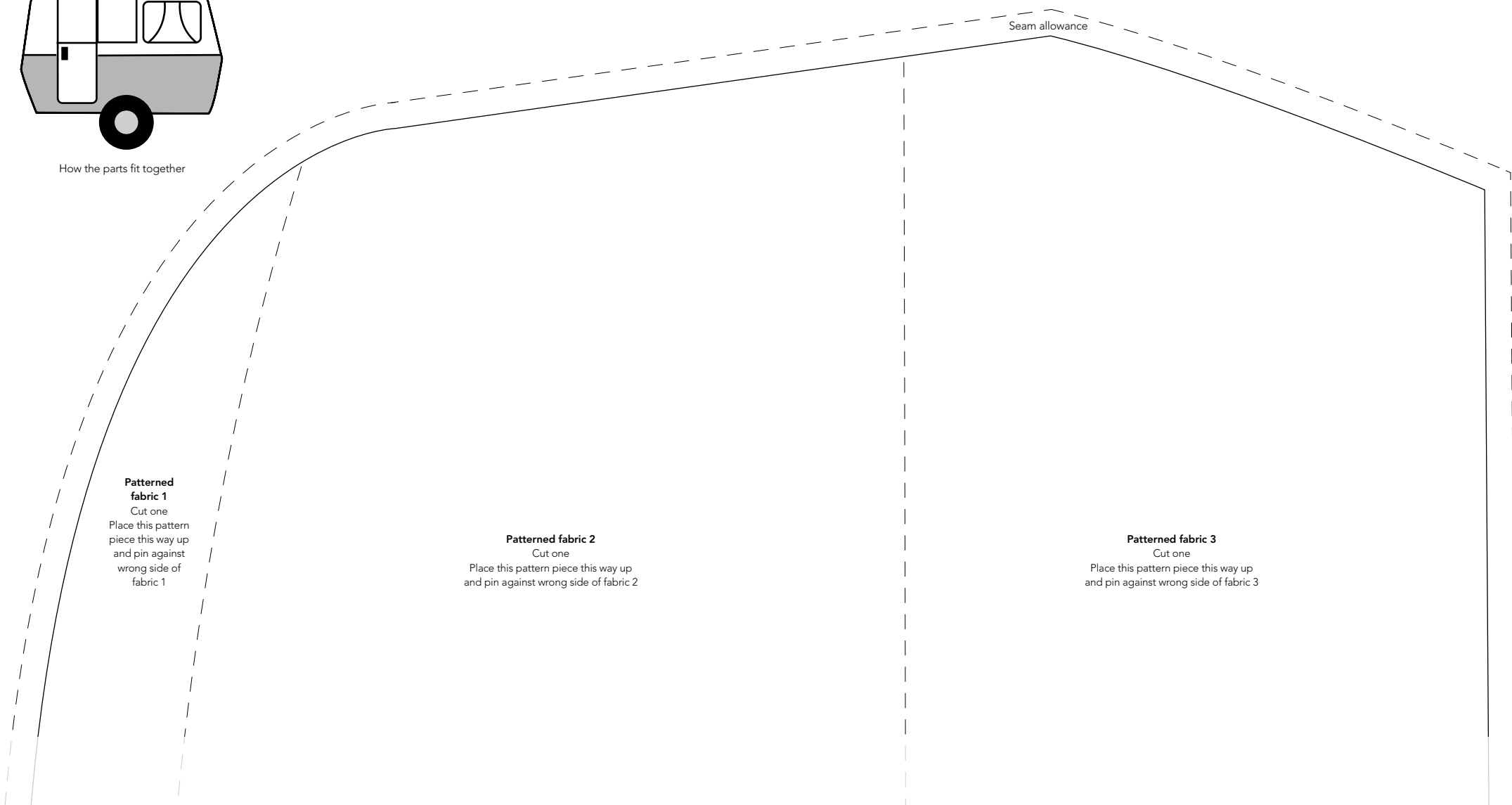


CARAVAN 2

By Sally Roydhouse Bonus pattern



How the parts fit together



Seam allowance

Patterned fabric 1

Cut one
Place this pattern piece this way up and pin against wrong side of fabric 1

Patterned fabric 2

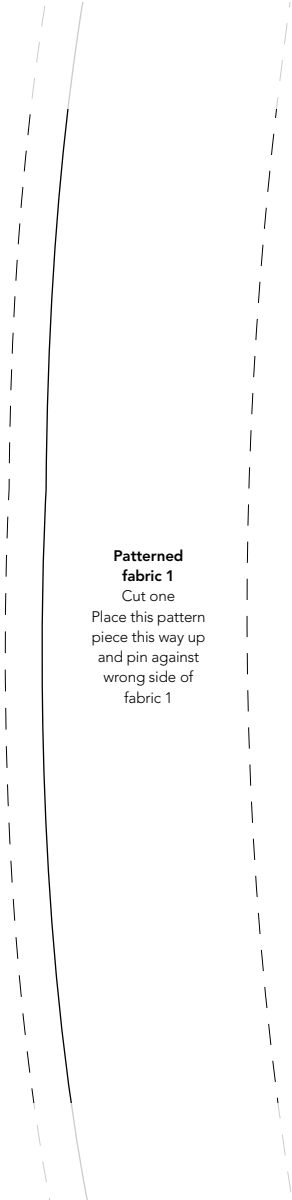
Cut one
Place this pattern piece this way up and pin against wrong side of fabric 2

Patterned fabric 3

Cut one
Place this pattern piece this way up and pin against wrong side of fabric 3

CARAVAN 2

By Sally Roydhouse Bonus pattern



Patterned fabric 1
Cut one

Place this pattern piece this way up and pin against wrong side of fabric 1

Patterned fabric 2
Cut one

Place this pattern piece this way up and pin against wrong side of fabric 2



Patterned fabric 3
Cut one

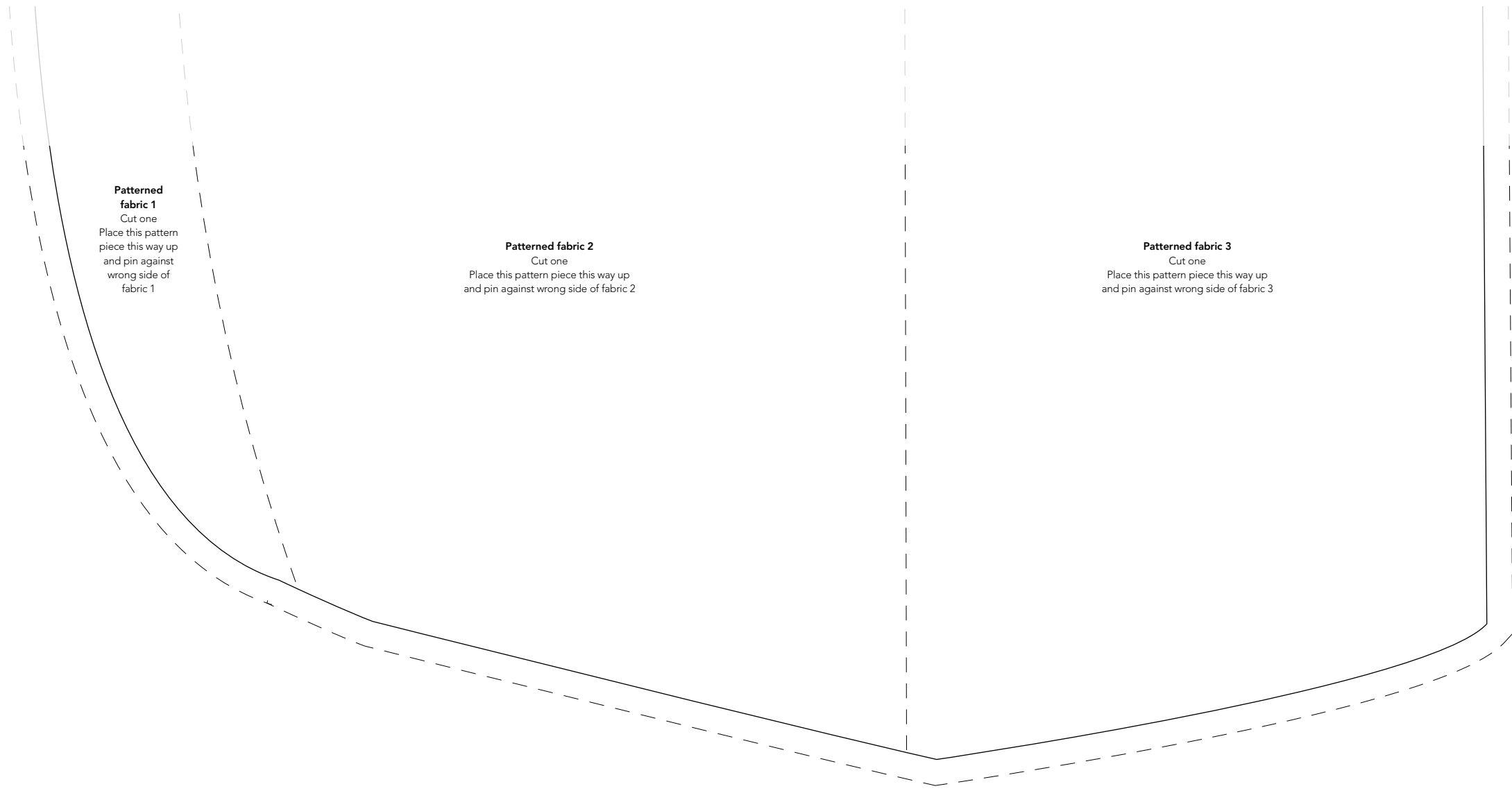
Place this pattern piece this way up and pin against wrong side of fabric 3



Seam allowance

CARAVAN 2

By Sally Roydhouse Bonus pattern



Patterned fabric 1

Cut one
Place this pattern piece this way up and pin against wrong side of fabric 1

Patterned fabric 2

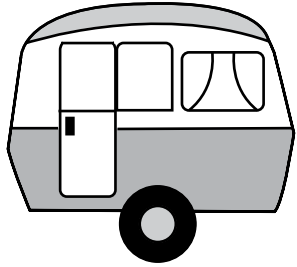
Cut one
Place this pattern piece this way up and pin against wrong side of fabric 2

Patterned fabric 3

Cut one
Place this pattern piece this way up and pin against wrong side of fabric 3

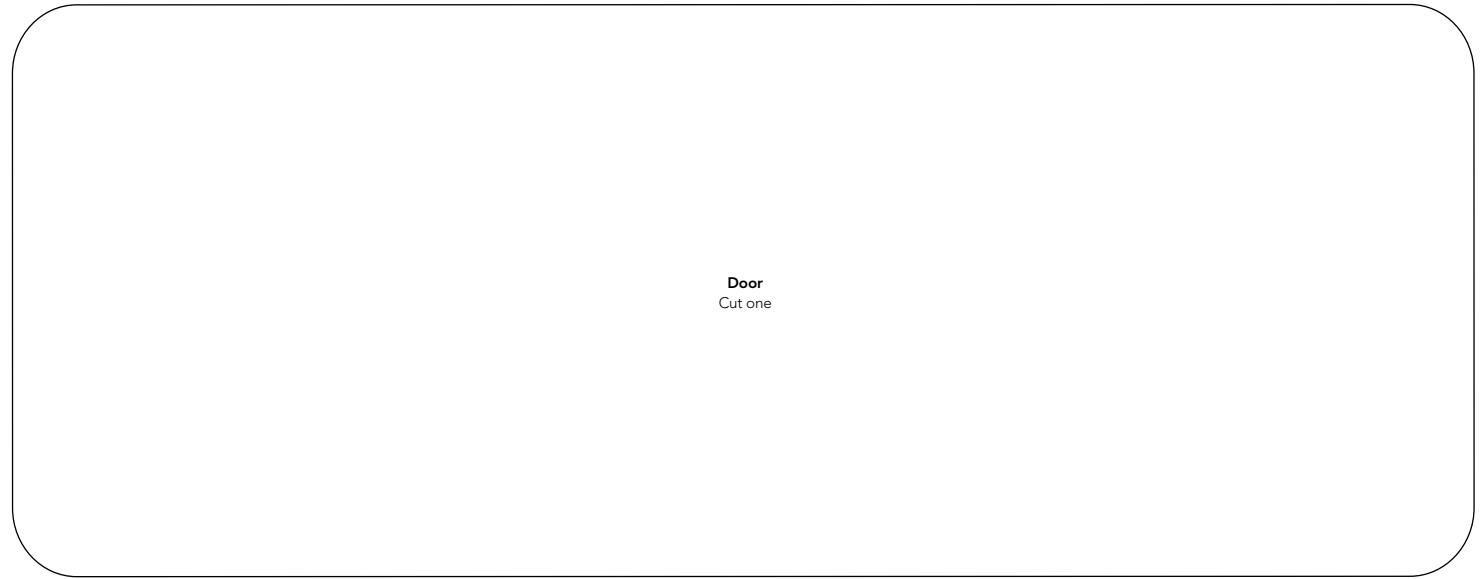
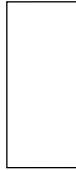
CARAVAN 2

By Sally Roydhouse Bonus pattern

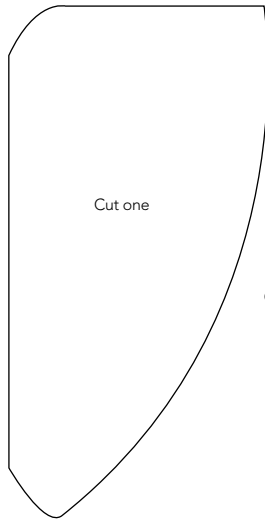


How the parts fit together

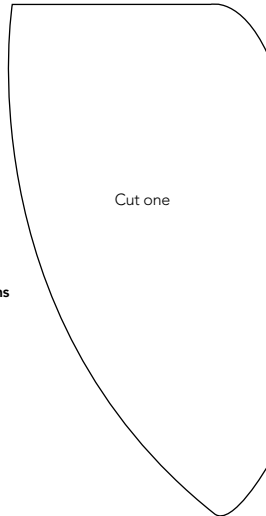
Doorknob
Cut one



Door
Cut one

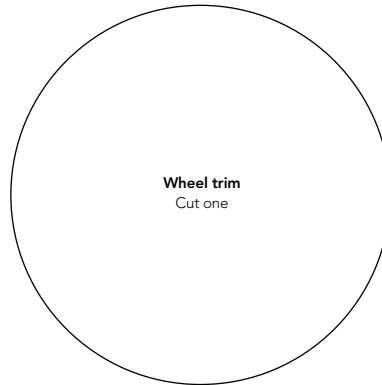


Cut one

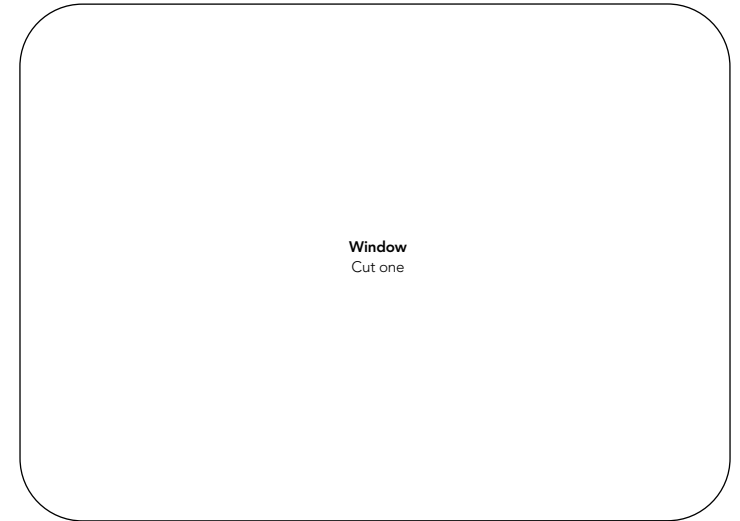


Cut one

Curtains



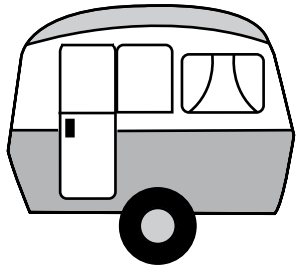
Wheel trim
Cut one



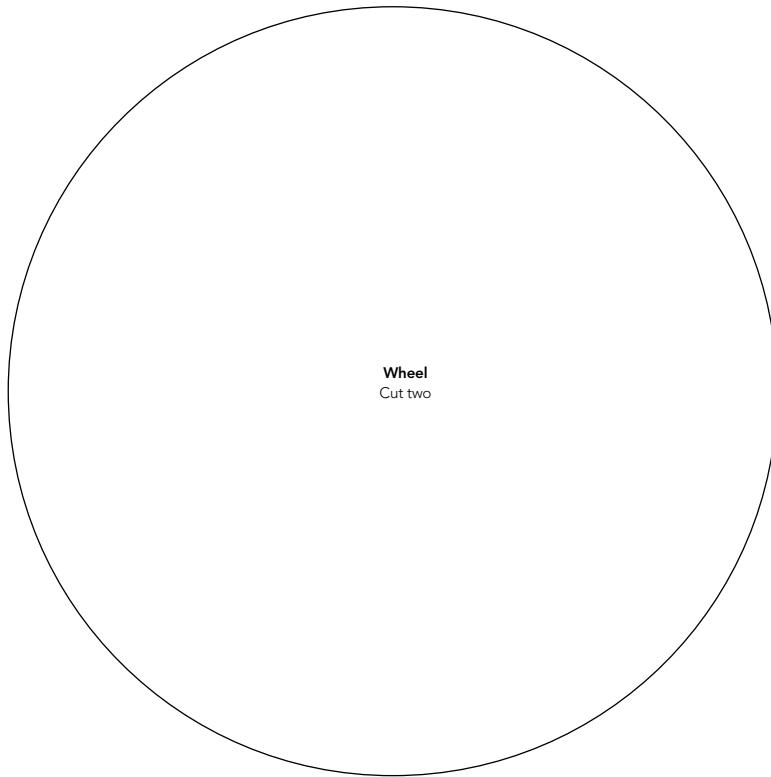
Window
Cut one

CARAVAN 2

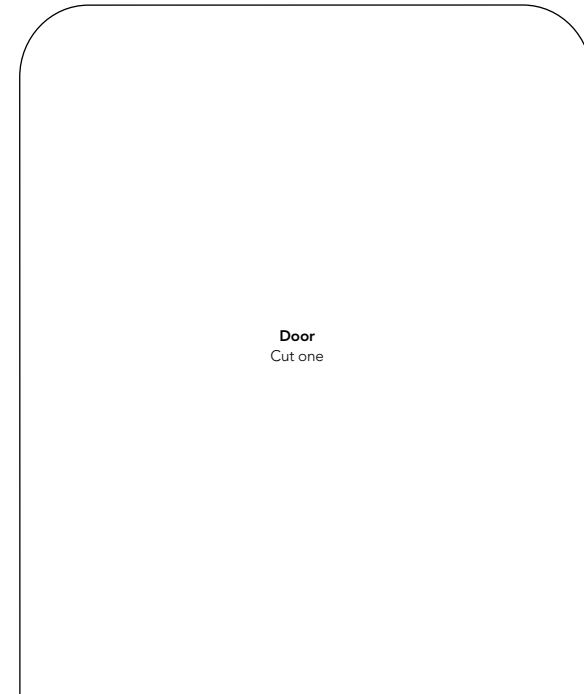
By Sally Roydhouse Bonus pattern



How the parts fit together



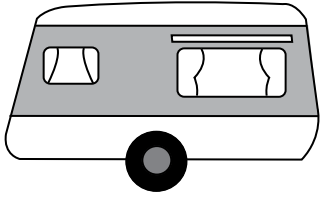
Wheel
Cut two



Door
Cut one

CARAVAN 3

By Sally Roydhouse Bonus pattern



How the parts fit together

Seam allowance

Patterned fabric 1

Cut one
Place this pattern piece this way up and pin against wrong side of fabric 1

Patterned fabric 2

Cut one
Place this pattern piece this way up and pin against wrong side of fabric 2

Patterned fabric 3

Cut one
Place this pattern piece this way up and pin against wrong side of fabric 3

CARAVAN 3

By Sally Roydhouse Bonus pattern

Seam allowance

Patterned fabric 1
Cut one
Place this pattern piece this way up and pin against wrong side of fabric 1

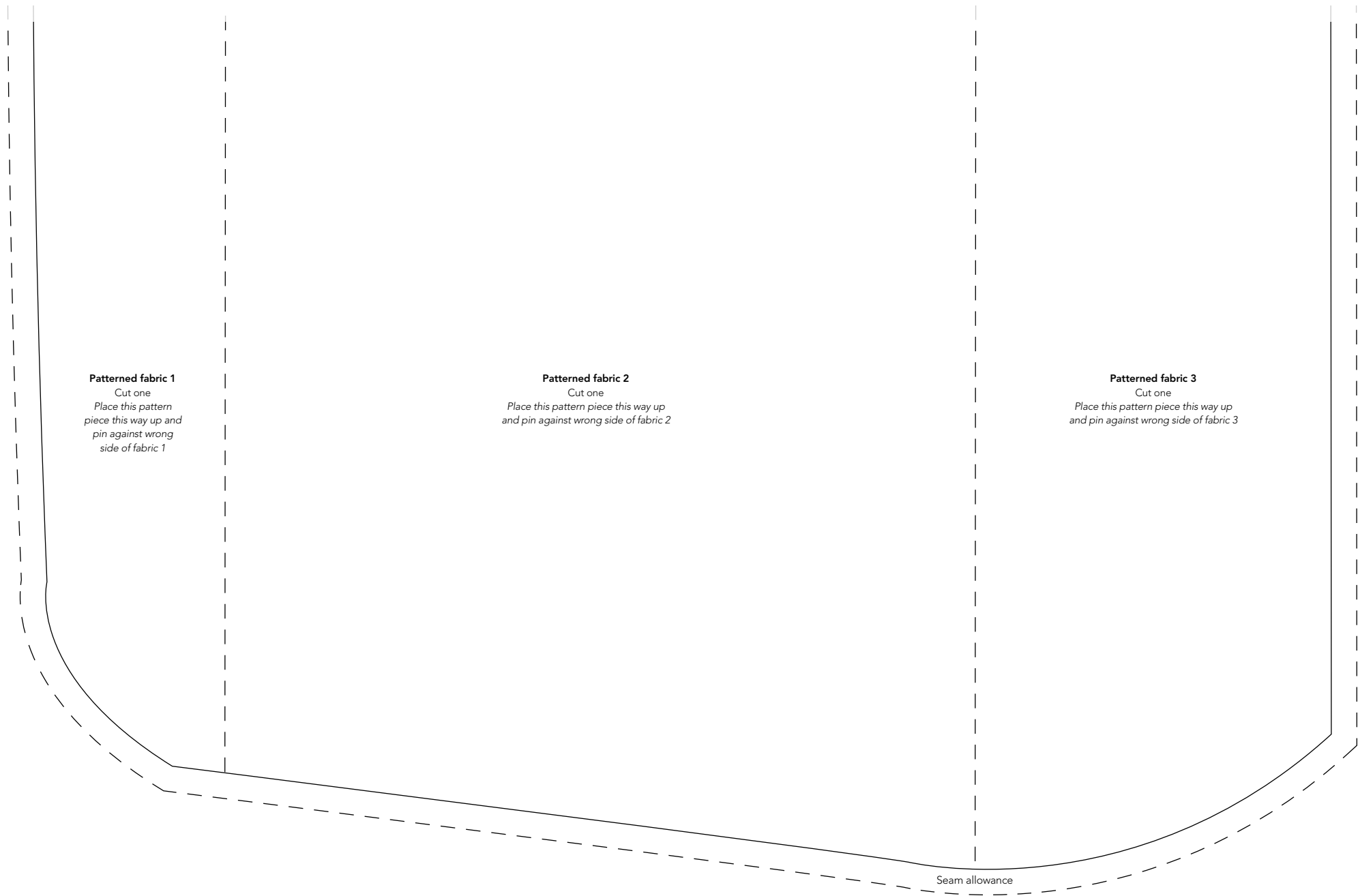
Patterned fabric 2
Cut one
Place this pattern piece this way up and pin against wrong side of fabric 2

Patterned fabric 3
Cut one
Place this pattern piece this way up and pin against wrong side of fabric 3

Seam allowance

CARAVAN 3

By Sally Roydhouse Bonus pattern



Patterned fabric 1

Cut one
Place this pattern piece this way up and pin against wrong side of fabric 1

Patterned fabric 2

Cut one
Place this pattern piece this way up and pin against wrong side of fabric 2

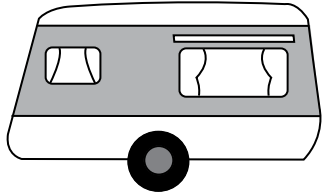
Patterned fabric 3

Cut one
Place this pattern piece this way up and pin against wrong side of fabric 3

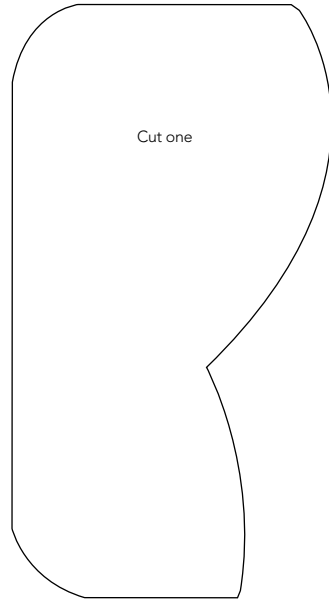
Seam allowance

CARAVAN 3

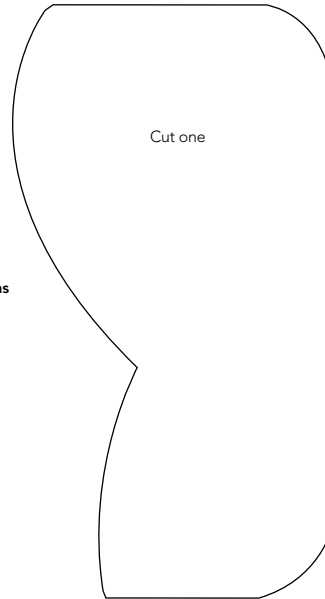
By Sally Roydhouse Bonus pattern



How the parts fit together

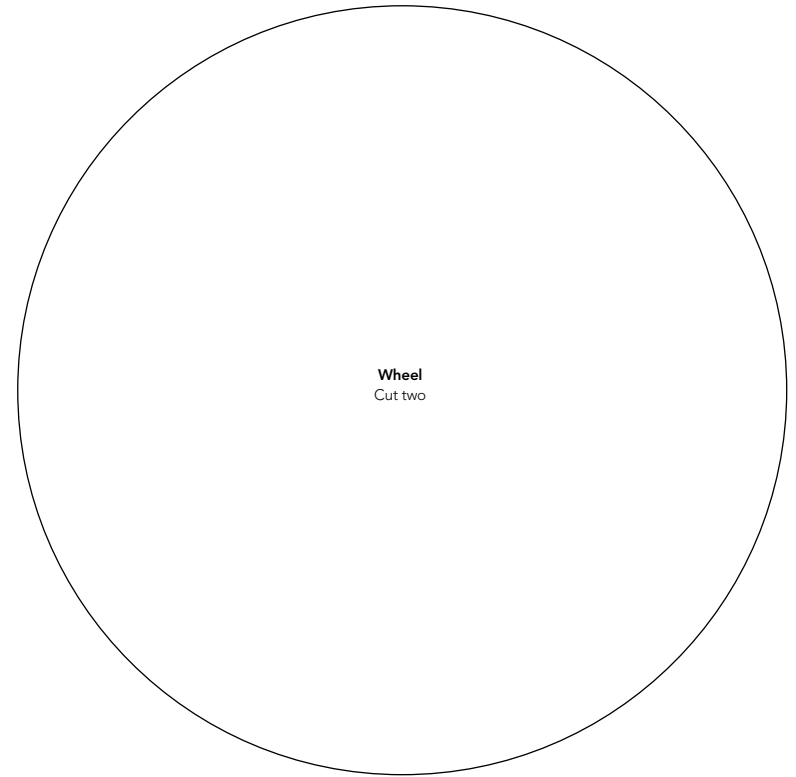


Cut one

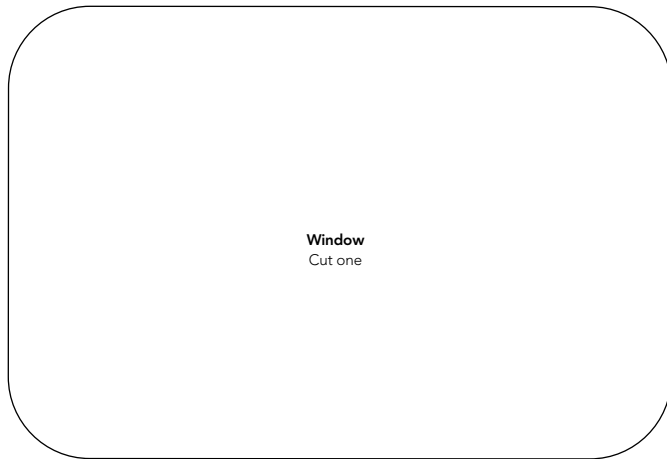


Cut one

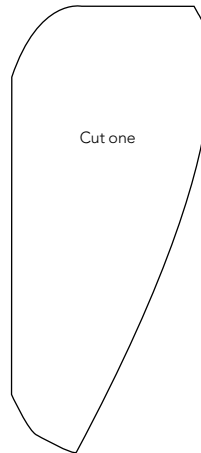
Curtains



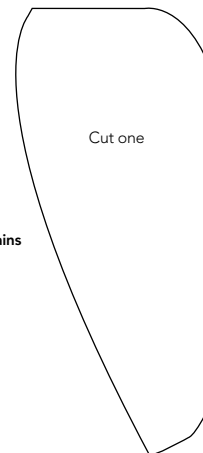
Wheel
Cut two



Window
Cut one



Cut one



Cut one

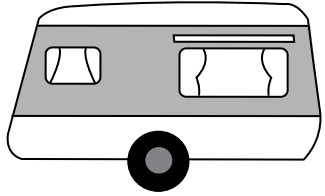
Curtains



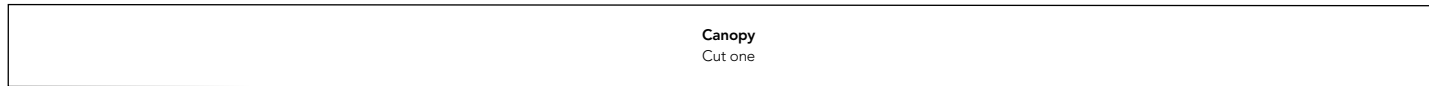
Wheeltrim
Cut one

CARAVAN 3

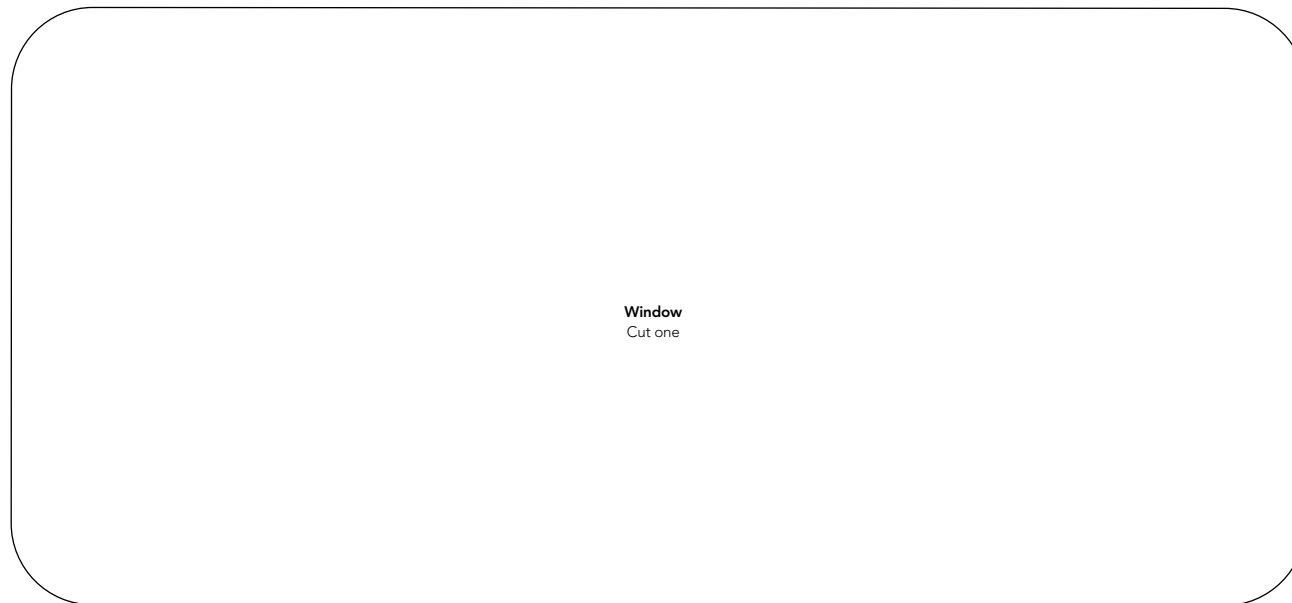
By Sally Roydhouse Bonus pattern



How the parts fit together



Canopy
Cut one



Window
Cut one